



HAARSLEV™

Processing Technology

WET MILL

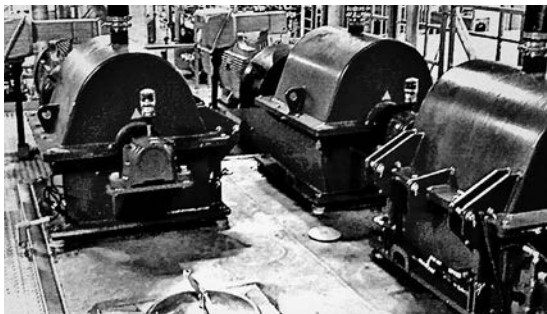
Product brochure



HAARSLEV™

Processing Technology

WET MILL



The Haarslev Wet Mill is designed for crushing and grinding large volumes of wet poultry or red meat.

This type of hammer mill equipment is usually part of a complete Haarslev fluidizer system, used for sizing coarse “wet” inputs into a meat slurry consisting of small particles that can be cooked quickly, with only a short retention time. Tallow can be pumped in from the fluidizer system to ensure the most efficient flow.

Everything that doesn't pass through the screen is continually recirculated for further grinding – until it can. This ensures a consistent output, which is ideal for the efficiency of your downstream evaporation processes.

“
FOR CRUSHING AND
GRINDING POULTRY OR RED
MEAT RAW MATERIALS.



APPLICABLE FOR:

- Turning “wet” poultry or meat raw materials into a slurry
- As part of a fluidizer system
- Preparation for efficient evaporation processes

BENEFITS

- Continual recirculation ensures outputs with consistent particle size
- Ruggedly engineered for maximum reliability and minimal maintenance
- Easy to swap out wearing parts, for maximum uptime and long service life

**PRE-BREAKER AND
APPROPRIATE METAL
DETECTOR EQUIPMENT**

Heavy-duty bearings for maximum reliability

Static perforated screen (replaceable)

Housing made of corrosion- and impact-resistant steel, for long service life

Hydraulic hood lift (with safety switch) provides easy access to all internals



Free-swinging hammers mounted on a rotating shaft and held in correct position by divider plates.

Covers easy to open, with effective seals to prevent leakage and smells

Combination of swinging hammers and gravity pushes raw material through the perforated screen

**CONSISTENT SLURRY
SUITABLE FOR
DOWNSTREAM EVAPORATION**

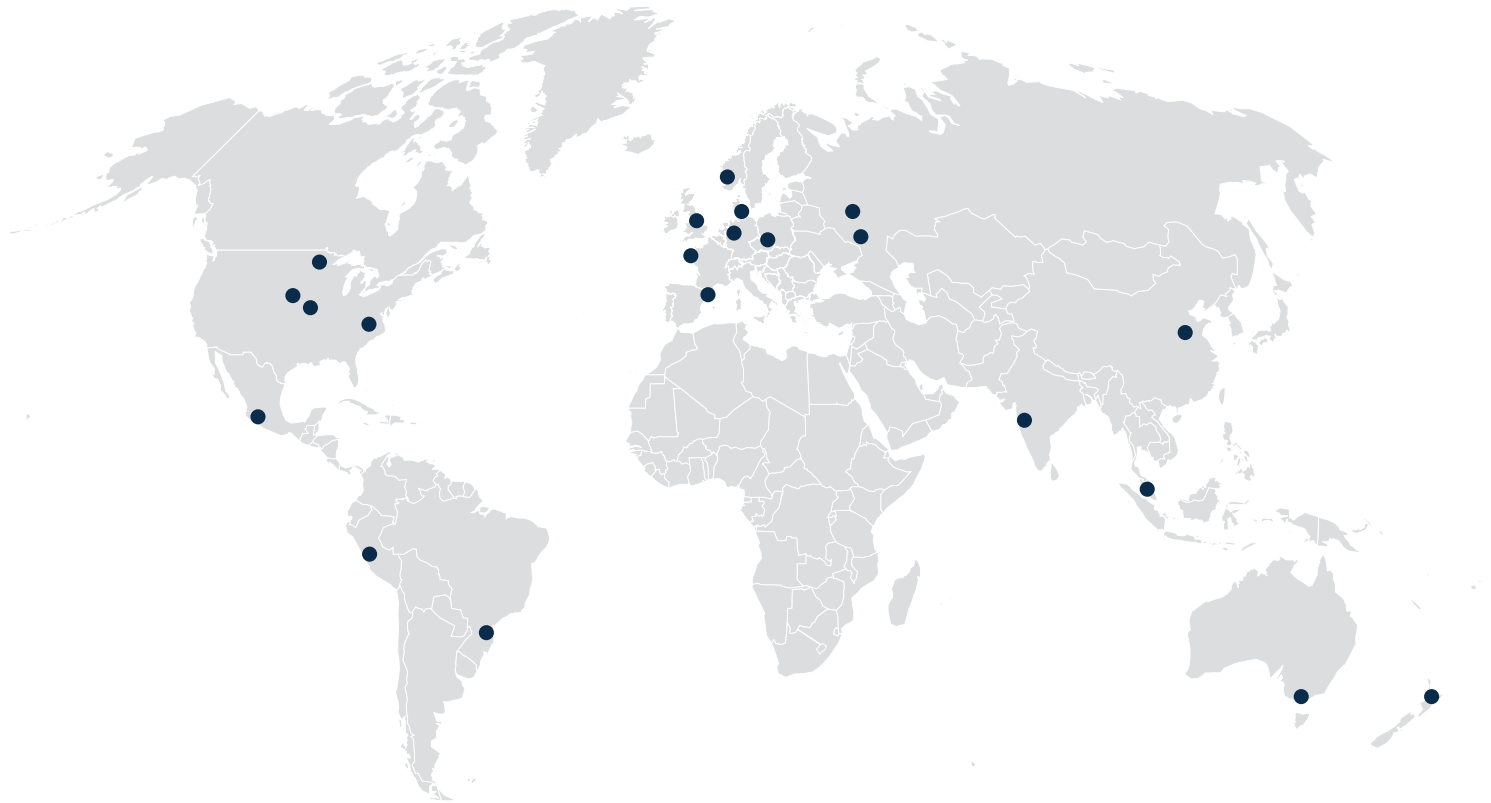
TYPE	ROTOR LENGTH (mm)	HAMMER	POWER (kW)	MOTOR (rpm)	WEIGHT (kg)
HWM 44	711	2 or 4 per row 44/92 units	150 kW	1,750	3,100

We reserve the right to alter the specifications at any time without prior notice.



HAARSLEV™

Processing Technology



PROCESS IS POTENTIAL

HEAD OFFICE

Haarslev Industries A/S · Bogensevej 85
DK-5471 Sønderlø · Denmark
Telephone: +45 63 83 11 00
Email: info@haarslev.com
www.haarslev.com

GLOBAL EXPERIENCE - LOCAL PRESENCE

Please contact us or visit our website
to locate the closest sales office.